

# Bottomline Print Manager™

## Drive Printing Efficiencies Across the Global Enterprise

There are significant organisational costs – of both time and money – associated with the interruption of critical printing processes, and the loss of key outbound documents due to printer failures. Without a reliable print management solution, your company may also be exposed to unnecessary financial and operational risks. Even one failed print job can result in lost invoices, uncollected revenue, missed shipping windows and strained IT resources.

Bottomline's Print Manager solution, now available as an additional module to all of Bottomline's document processing platforms, including Create!form®, FormScope® and Optio® solutions, is designed to help your company maximise enterprise printing efficiencies in an increasingly document-intensive business environment.

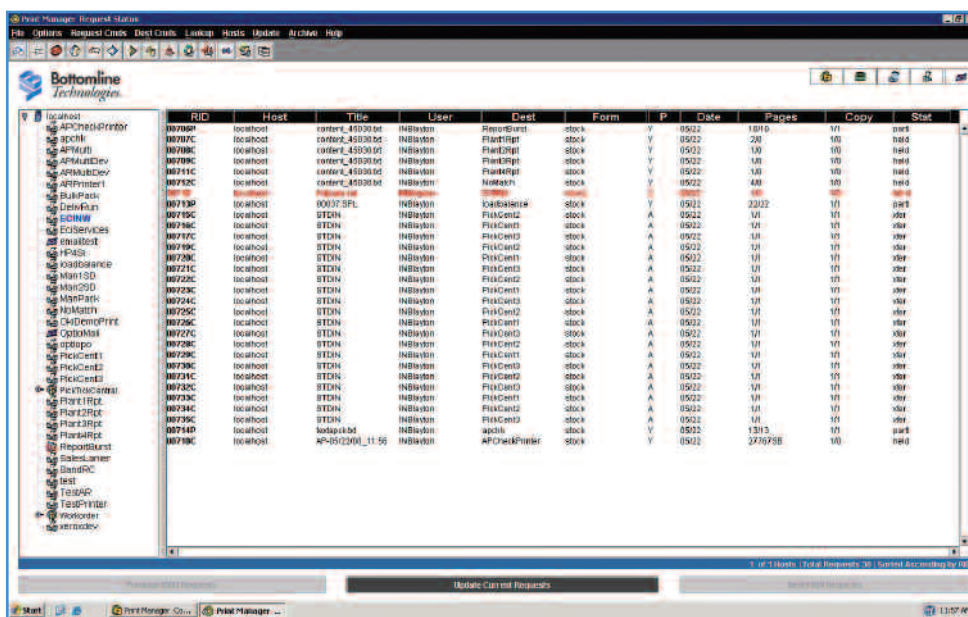
### Take your Printing Investment to the Next Level

With features for assured delivery, bi-directional printer communications and both end-user and application notification, Bottomline Print Manager takes the guesswork out of traditional printing infrastructures. Organisations can now configure and control remote printing resources, confirm delivery, proactively anticipate and correct problems, reduce network downtime, automate printer fail-over, and manage multiple types of document output – all from a single, secure interface.

### Maximum Printer Value with Minimum Printer Maintenance

Bottomline Print Manager delivers superior printing infrastructure performance with minimal manual intervention, providing:

- **Assured delivery** – confirm print job delivery with specific event notifications.
- **Printer load balancing** – eliminate bottlenecks by automatically spooling jobs to multiple printers.
- **Automated fail-over** – dynamically redirect jobs to other devices when the primary printer is offline or out of paper.
- **User notification** – automatically notify end users of print destination and status, eliminating unnecessary support calls.
- **SAP® BC-XOM Interface** – certified integration with Print Manager provides confirmation of critical document delivery for SAP users.

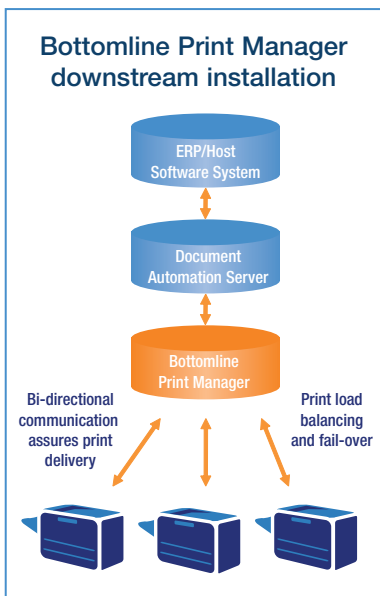


## Optimise IT Resources for Downstream Printer Management

Stop wasting valuable time searching for IP addresses of printers, fielding unnecessary calls from users or wondering if the relevant printer is available or offline. Bottomline Print Manager dynamically distributes the downstream workload from your document server so that printer networks are never underused or overburdened. The system automatically identifies the most efficient printer for each job, routing high-volume output to the fastest devices and reserving colour printers for colour-only jobs.

Additionally, Print Manager will automatically spool large jobs to multiple devices to avoid single printers repeatedly being used for large document jobs, redirect jobs if the primary printer is unavailable and alert end users to any redirections.

If a device fails, Print Manager automatically redirects or reprints jobs without accessing your ERP system or requiring IT assistance.



### Business applications for Print Manager include:

**Payroll/HR** Ensure cheque runs for Payroll, Expenses Payments and ad hoc payments have successfully printed and only at printers in designated secure areas. HR can print confidential employee documents including contracts, reviews, salary/bonus details etc in the knowledge that output will only print at certain printers and they can have instant notifications that a document has either failed or printed, and also at which defined printer.

**Marketing** Send document proofs and copies to other departments or offices and ensure they are received for amends and feedback. No more delays waiting on documents that were never received. Ensure campaign mailings are successfully delivered to the print room and produced according to required timescales.

**Dispatch and Delivery** Shipping and packing documents are critical to an organisations dispatch and delivery function. If goods can't be delivered then invoicing may not be possible, representing a delay to your cash flow.

Ensure your deliveries can still be made and orders fulfilled by confirming that business critical documents successfully print at depots to enable speedy dispatch.

**AP/AR and Procurement Departments** AR departments can now streamline and improve the reliability of important document dispatch. Ensure that your invoice runs print first time, every time, and eliminate any delays here that cause an increase to your Days Sales Outstanding and delayed revenue to the company. AP department can now ensure that supplier payment cheque runs and remittance advice notes have successfully printed at designated printers, and help speed up the invoice payment process, increasing the possibility of achieving early payment discount along with improved security.

**Purchasing/Procurement Departments** can now speed up and improve the delivery around PO's and other important outbound documents and help reduce purchasing and delivery times for orders of goods either for resale or goods for manufacturing. Maintain production schedules with assured delivery of business critical documents to suppliers.

Print Manager can also be used by any other department where business critical document printing needs to be assured rather than hopeful.

Print Manager from Bottomline provides this assurance with unparalleled monitoring and control of your printer network to help streamline, automate and confirm all of your organisation's printing requirements.

**Don't leave it to chance; ensure it prints first time, every time with Bottomline Print Manager.**

### About Bottomline Technologies

Bottomline Technologies (NASDAQ: EPAY) provides collaborative payment, invoice and document automation solutions to corporations, financial institutions and banks around the world. The company's solutions are used to streamline, automate and manage processes and transactions involving global payments, invoice approval, purchase-to-pay, collections, cash management and document process automation. Organisations trust these solutions to meet their needs for cost reduction, competitive differentiation and optimisation of working capital. Headquartered in the United States, Bottomline also maintains offices in Europe and Asia-Pacific.

For more information visit [www.bottomline.co.uk](http://www.bottomline.co.uk)

**SAP** Certified Integration

**ORACLE** CERTIFIED PARTNER

**ORACLE** CERTIFIED PARTNER  
JD EDWARDS ENTERPRISEONE

**Microsoft**  
**GOLD CERTIFIED**  
Partner



**Corporate Headquarters**  
325 Corporate Drive  
Portsmouth, NH 03801 USA  
tel +1 800 472 1321, +1 603 436 0700  
fax +1 603 436 0300  
email [info@bottomline.com](mailto:info@bottomline.com)

**Europe, Middle East, Africa**  
115 Chatham Street  
Reading, Berkshire RG1 7JX UK  
tel +44 118 925 8250  
fax +44 118 956 9990  
email [emea-info@bottomline.com](mailto:emea-info@bottomline.com)

**Asia-Pacific**  
12-14 Cato Street, Suite 214  
Hawthorn East, VIC, 3123 Australia  
tel +61 3 9824 6888  
fax +61 3 9824 6866  
email [ap\\_info@bottomline.com.au](mailto:ap_info@bottomline.com.au)